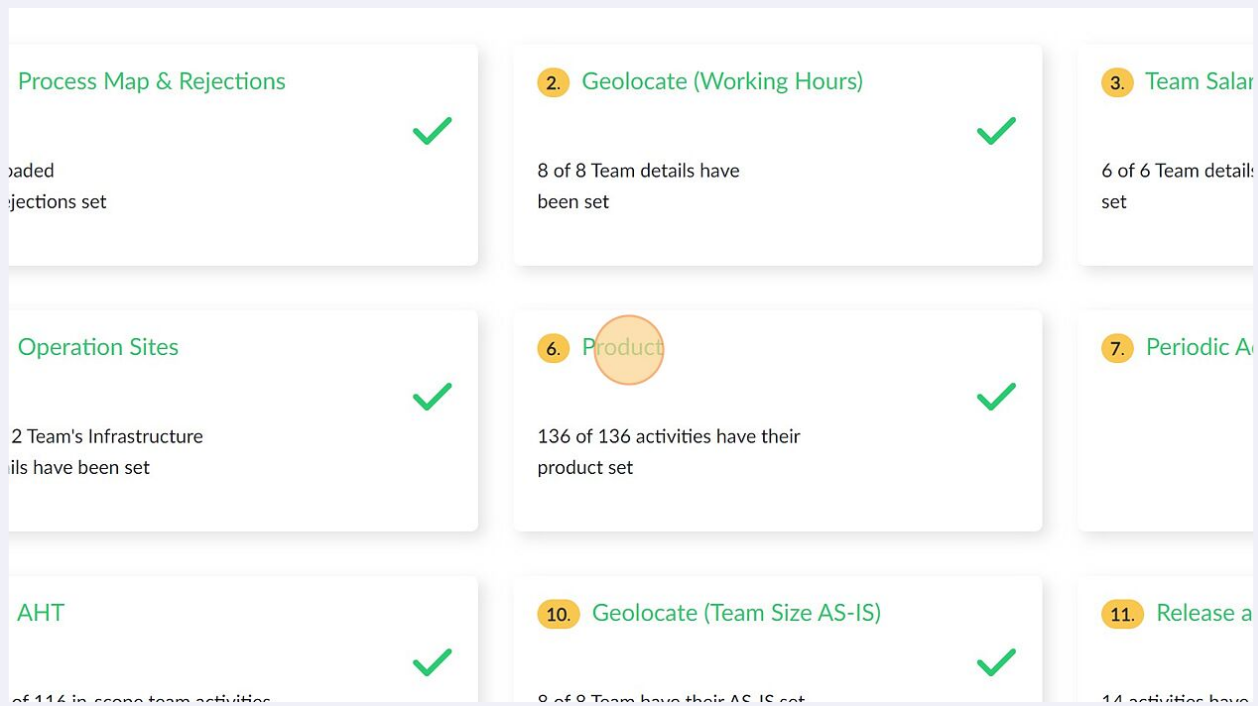


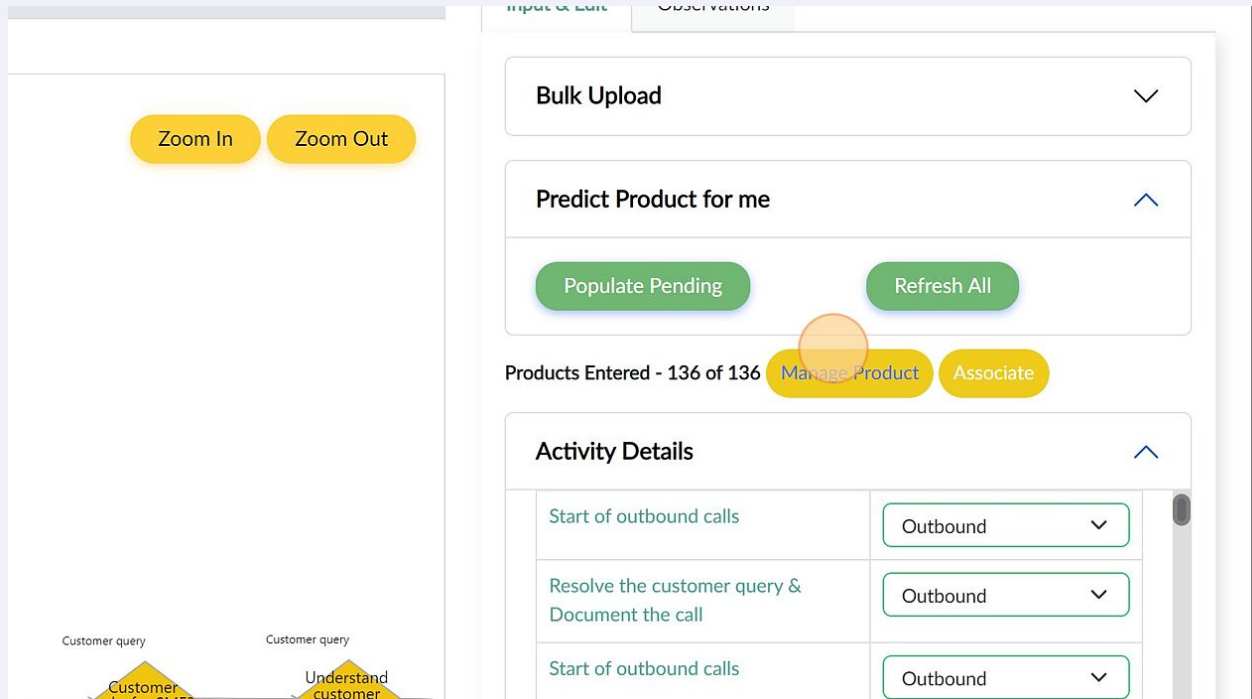
How to upload Products information

1 Click "6. Product" from Input Model screen

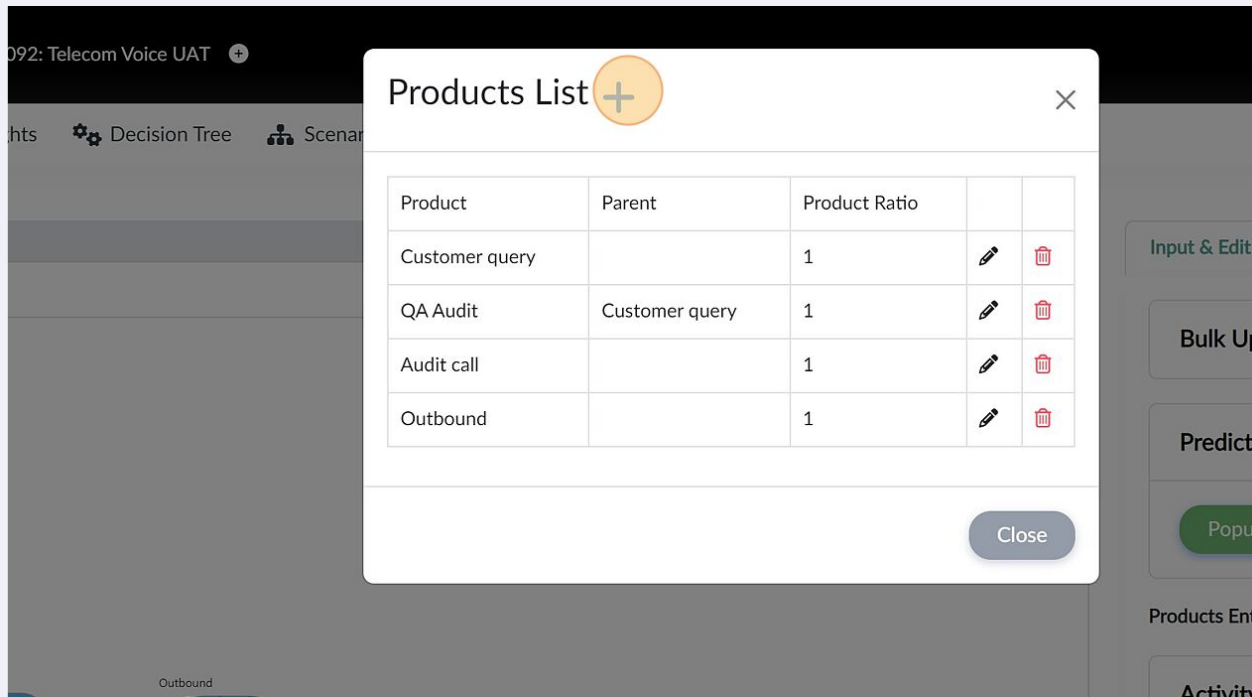


Process Map & Rejections oaded jections set	2. Geolocate (Working Hours) 8 of 8 Team details have been set	3. Team Salar 6 of 6 Team detail: set
Operation Sites 2 Team's Infrastructure ils have been set	6. Product 136 of 136 activities have their product set	7. Periodic A
AHT of 114 in scope team activities	10. Geolocate (Team Size AS-IS) 9 of 9 Team have their AS-IS set	11. Release a 14 activities have

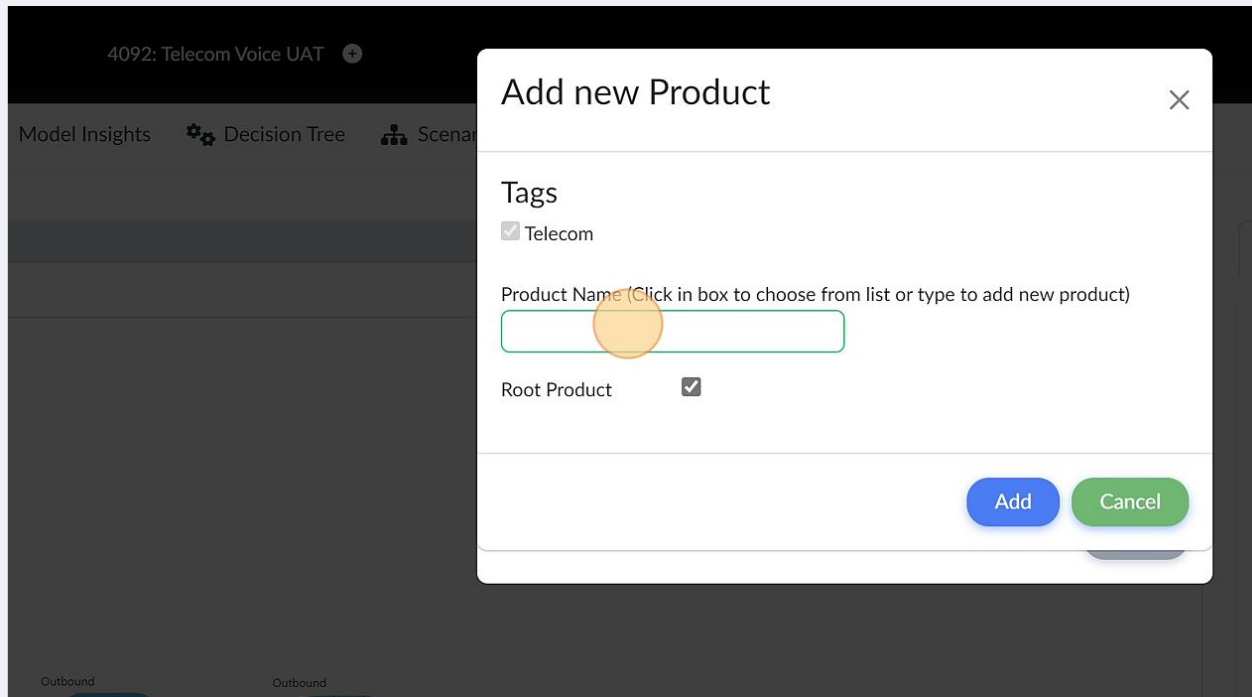
2 To add products, click "Manage Product"



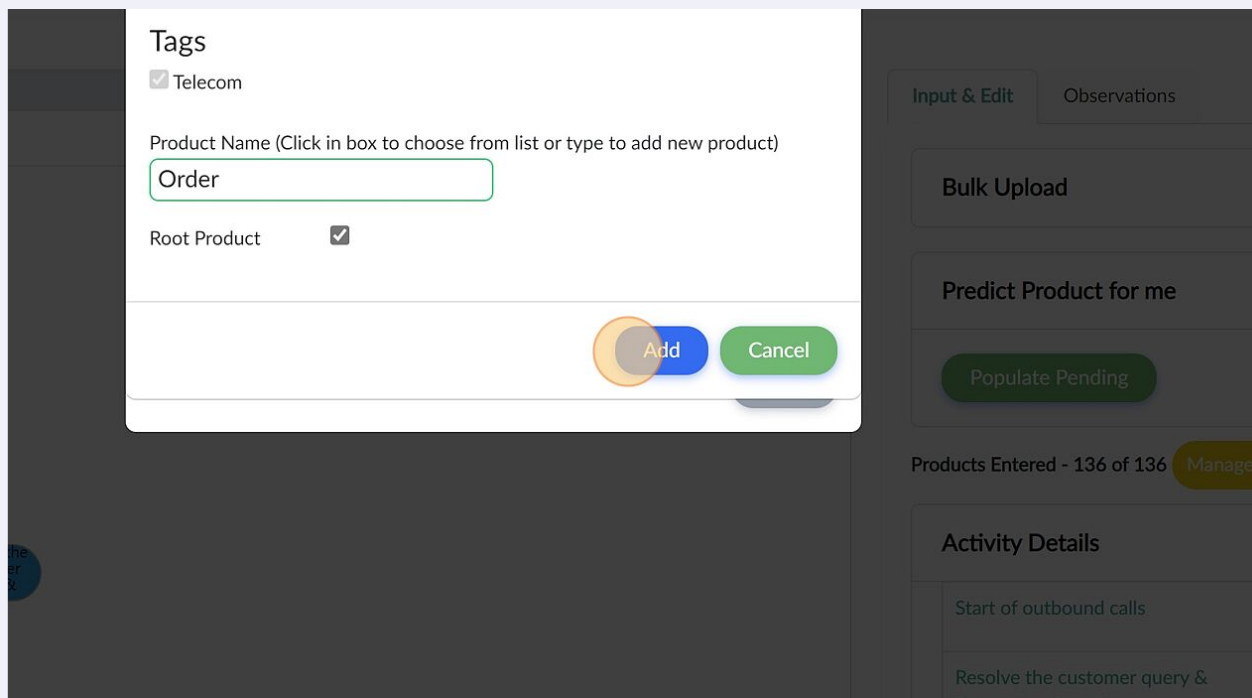
3 Click on the "+" icon to add product



4 Type the name of the product



5 Click "Add". Repeat the same steps to add more products



6

To assign products to an activity, click on dropdown next to an activity and select the relevant product.

The screenshot shows a software interface with a process flow diagram on the left and an 'Activity Details' table on the right. The process flow diagram includes a decision diamond 'Customer or SME?' leading to 'Understand customer request', which then branches into 'Customer query' and 'Customer'. The 'Activity Details' table has the following structure:

Activity	Product
Start of outbound calls	Outbound
Resolve the customer query & Document the call	Outbound
Start of outbound calls	Outbound
Resolve the customer query & Document the call	Outbound
Start - Auditing by AT&T	Audit call

Buttons at the top include 'Populate Pending' (highlighted), 'Refresh All', 'Manage Product', and 'Associate'. The status 'Products Entered - 136 of 136' is shown.

7

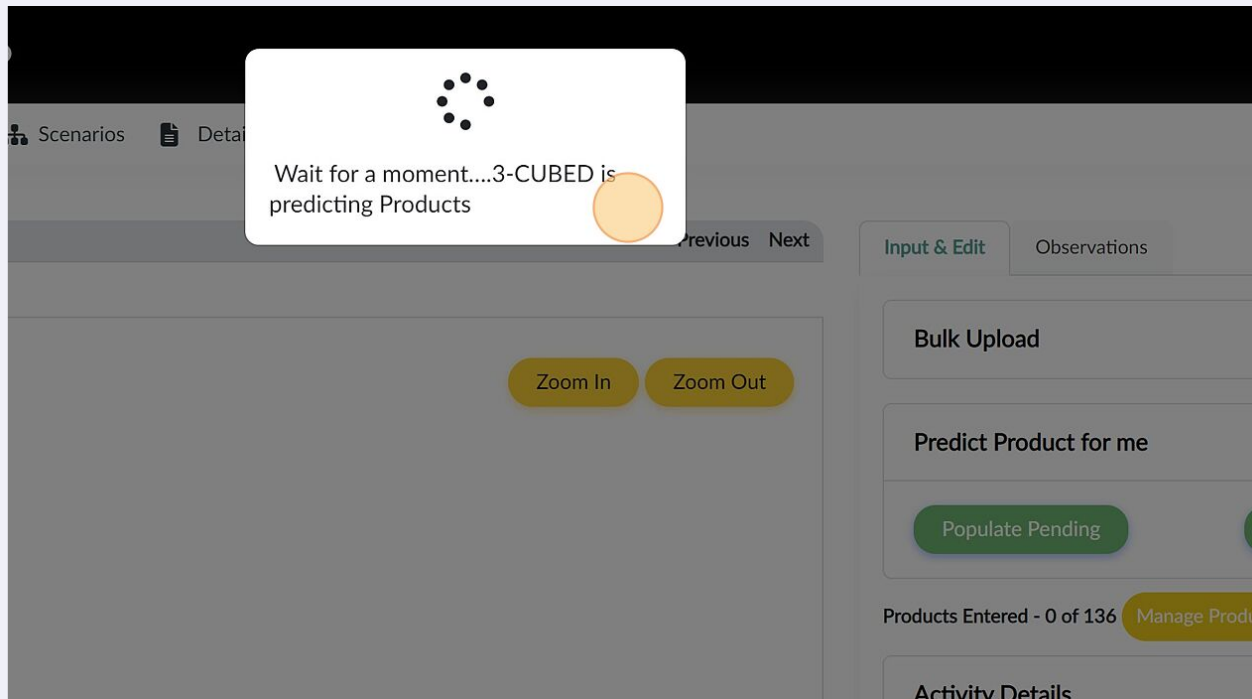
You can also use the "Populate Pending" button to let 3-Cubed predict the products for the activities. Please review the products once prediction is complete

The screenshot shows a software interface with a 'Predict Product for me' section and an 'Activity Details' table. The 'Predict Product for me' section includes a 'Populate Pending' button (highlighted) and a 'Refresh All' button. Below it, the status 'Products Entered - 0 of 136' is shown. The 'Activity Details' table has the following structure:

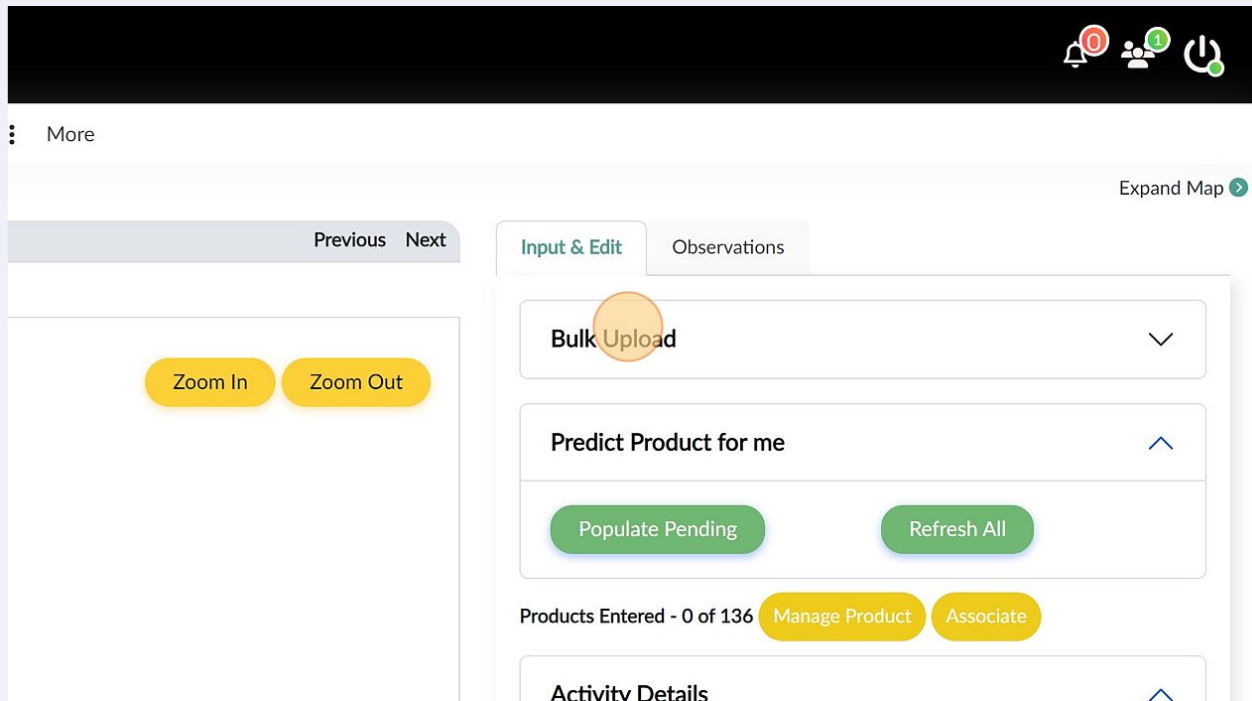
Activity	Product
Start of outbound calls	--Select Product--
Resolve the customer query & Document the call	--Select Product--

Buttons at the top include 'Zoom In', 'Zoom Out', 'Previous', 'Next', 'Input & Edit', and 'Observations'.

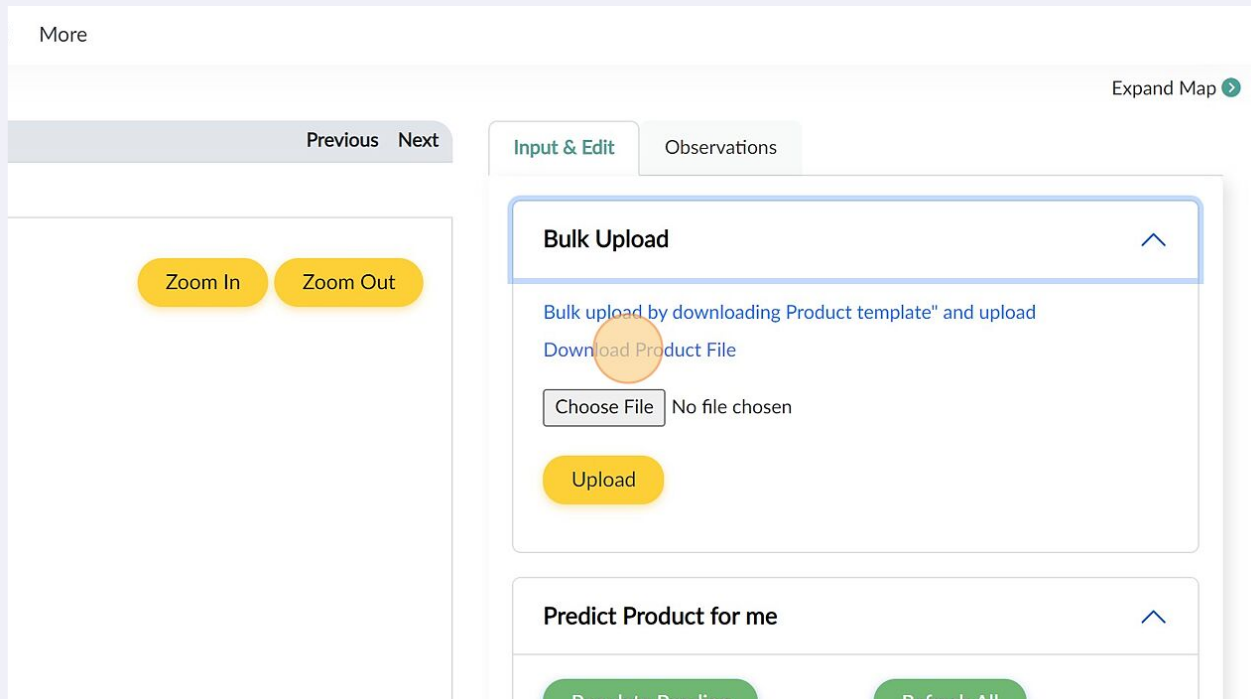
8 3-Cubed predicting the products



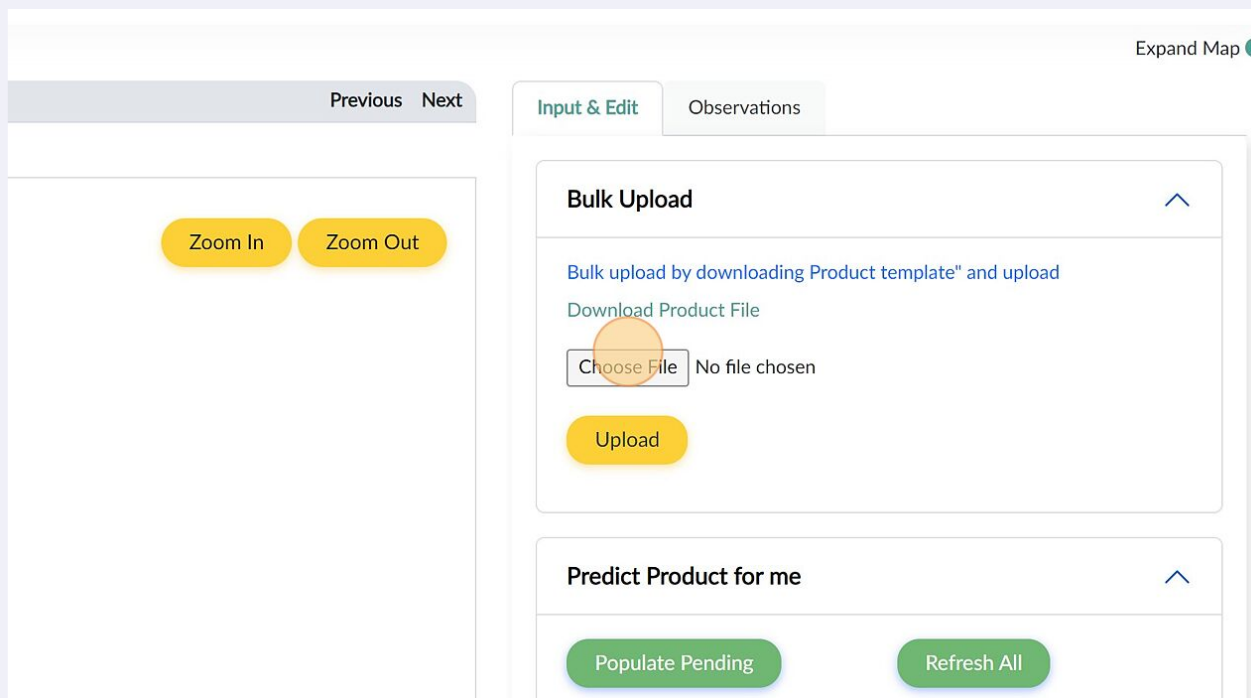
9 Alternatively, the products can be uploaded through an Excel file. Click "Bulk Upload"



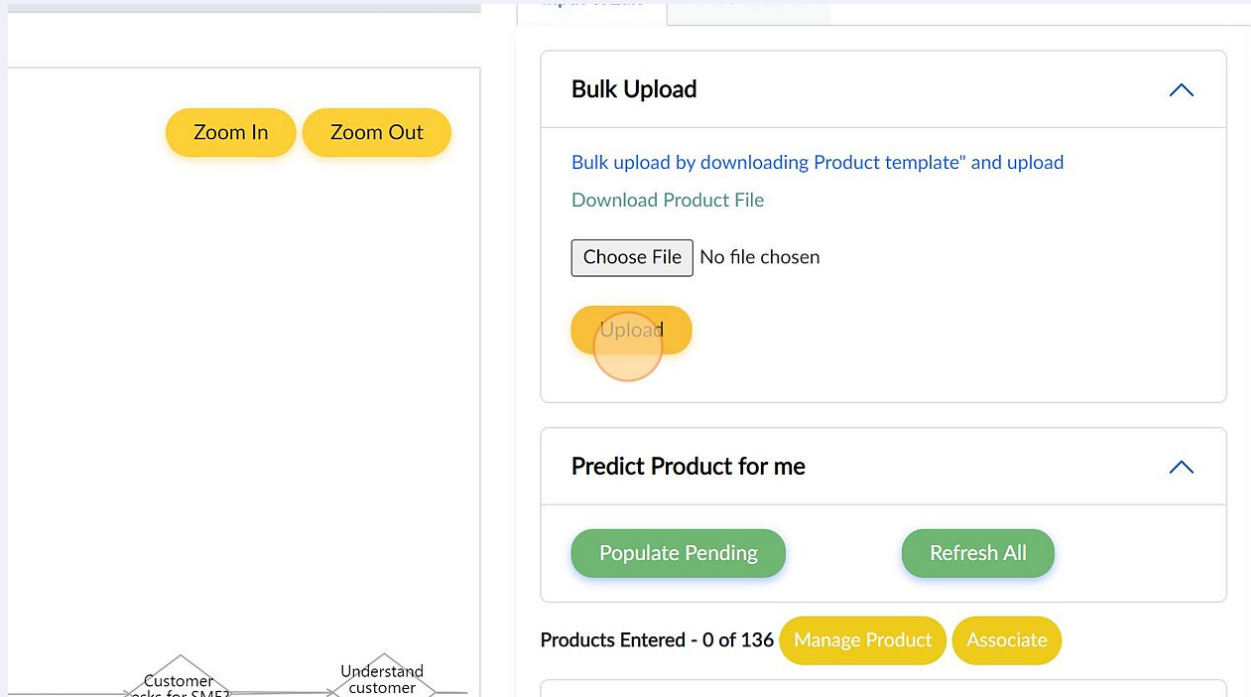
10 Click "Download Product File" and fill the products in the downloaded file



11 Reupload the same file after saving it



12 Click "Upload"



13 Click "Observations" to review all the information entered about products. Make changes if required

